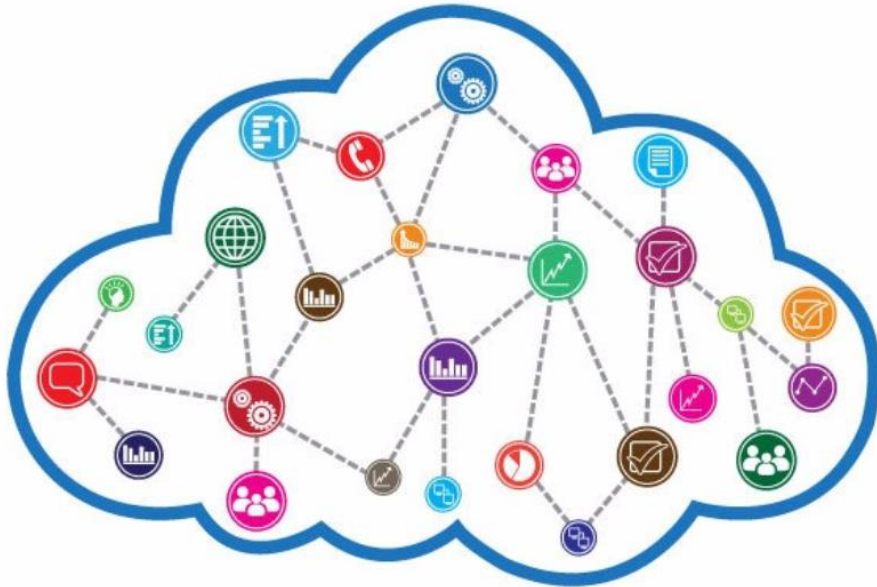




Data Tools to Assist in Your ID&R Efforts



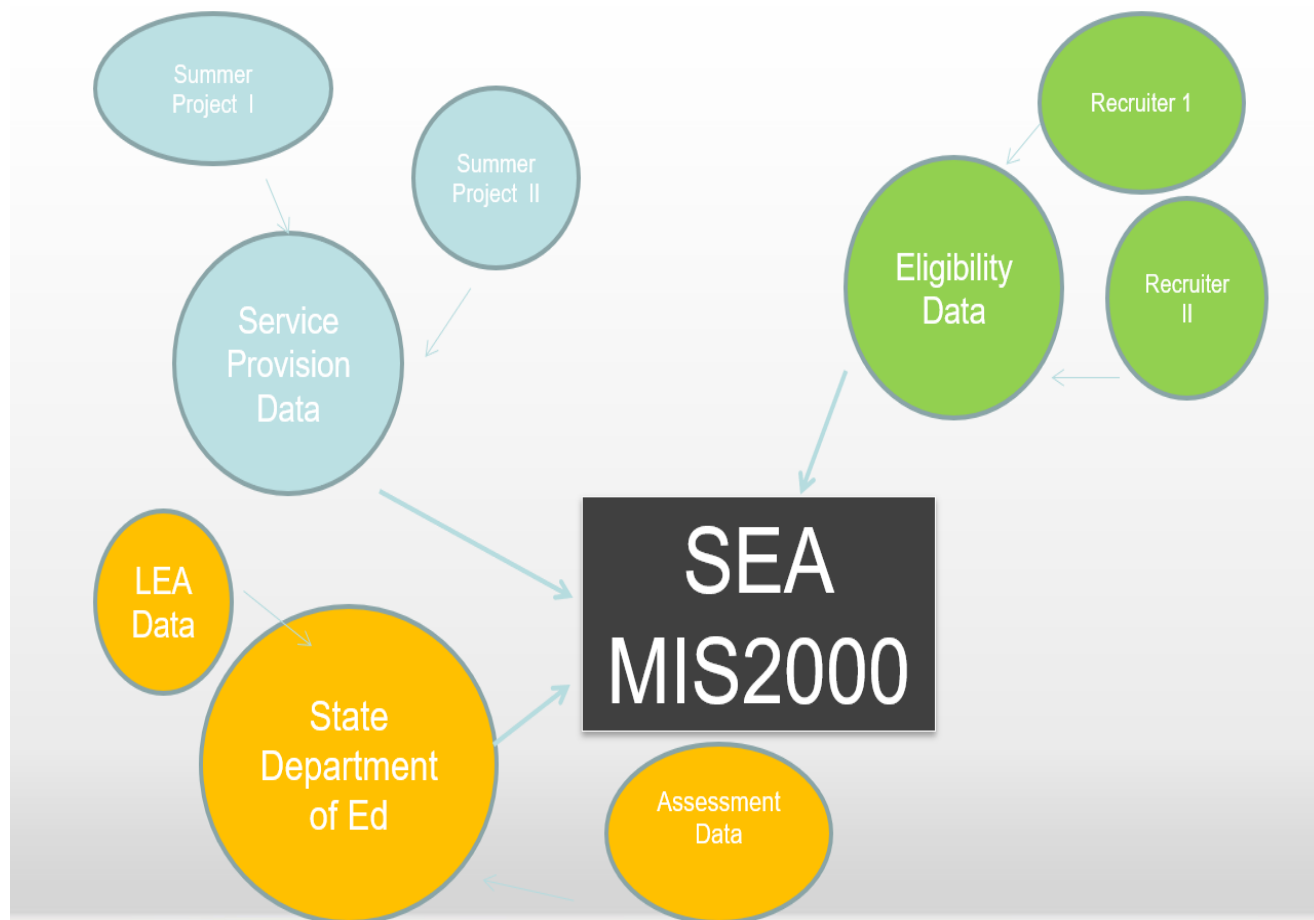
Jessica Castañeda
IRRC Consultant



Why collect data?

- **Federal Reporting Requirements**
- **Monitor Student Progress**
- **Informs Effectiveness of Programs**
- **Targets Interventions**
- **Establish and Champion Best Practices**
- **COLLABORATION**

How does your data flow go?





MEP Data Quiz

1. How many total migrant students are enrolled in your state MEP program?
2. How many are enrolled in your region or district?
3. What percentage of the eligible MEP population received services this program year?
4. Is there an area where students are not currently receiving services?
5. Does your state have more K-4 kids, pre-K, 5-12th or OSY students?
6. What are your top three crops in your state?
7. What percentage of your state migrant population is learning English?
8. Do you have any resources in place now to help you know what crops are in each of your counties?
9. What percentage of your students are priority one?
10. What months do you have more students moving in or out of your state?
11. What is one factor that is effecting the increase or decrease of migrant students in your state?



Finding the Right Tools

What tools does your program use to analyze and understand your data?

This includes:

- **Student demographics**
- **Agriculture related information**
- **Program Services Information**
- **ID&R data**



Most programs are using spreadsheets from their state databases. Are you using anything else?

Finding the Right Tools

What tools does your program use to analyze and understand your data?

This includes:

- **Student demographics**
- **Agriculture related information**
- **Program Services Information**
- **ID&R data**



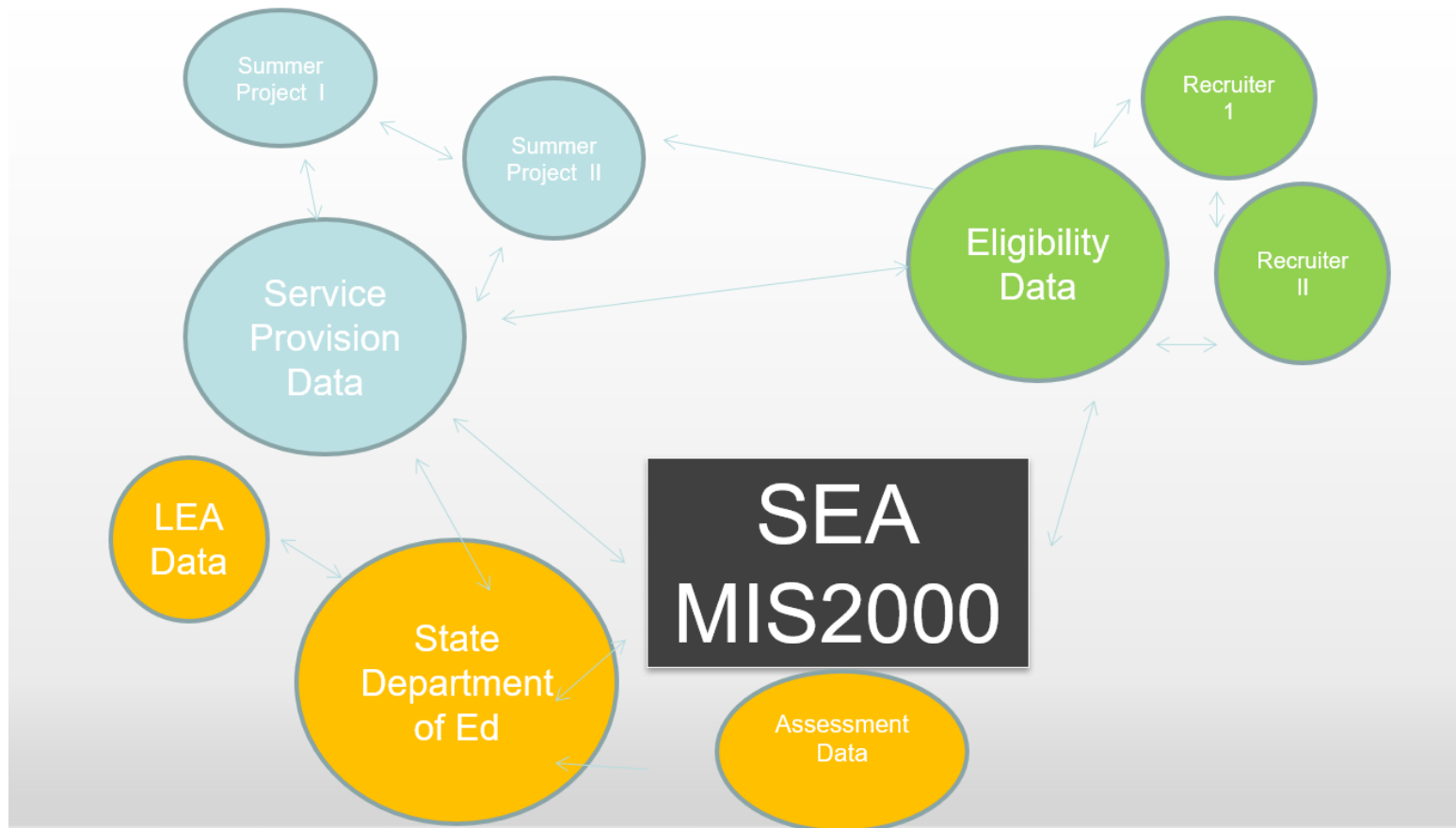
How is that data shared throughout your program?

Why is it so important to be analyzing your program data?

Provide examples...



With Data Integration





Finding the Right Tools

A couple of free helpful resources to share data are:

[Google forms](#) & [spreadsheets](#) or [Charts](#)

[Power BI](#)

[Tableau Public](#)



Has anyone used these resources?

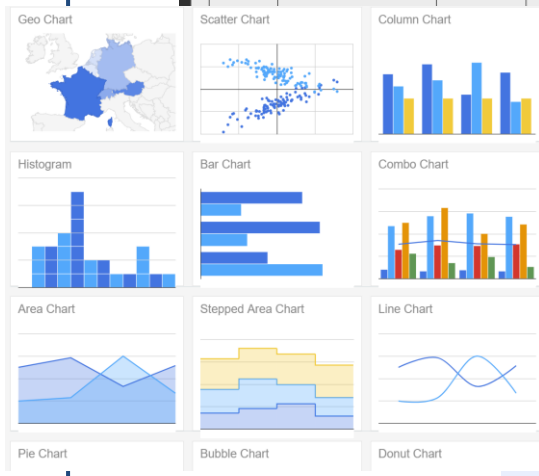


Finding the Right Tools

Google forms & spreadsheets or Charts

**Brainstorm-
How could these be
helpful with data?**

Area	Type of Resource	Name	Street Address	City, State, Zip	County	Region	Phone Number	Notes	Notes
1	Dairies	Big Sky Dairy	17800 Stern Dr	La Mesa, NM 88044	Donna Ana	Region 1	(505) 233-3620	Estimated Employees: 17	
1	Dairies	Big Sky Dairy	10 Sado Frontage Rd	Valdo, NM 88072	Donna Ana	Region 1	175-233-3620	Founded in 1981, Big Sky Dairy is a small organization in the dairy farms industry located in Valdo, NM. It has 28 full time employees and generates an estimated \$2.4 million in annual revenue.	
1	Dairies	Big Dairy Feedlot	1103 Leaver Rd	Anthony, NM 88021	Donna Ana	Region 1	(505) 882-1132		
1	Churchs	Reynolds de la Santisima/Reynolds de la Vida Sanctuario	136 Anthony Dr	Anthony, NM 88021	Donna Ana	Region 1	(505) 236-9197		
1	Dairies	Bright Star Dairy	11820 S Stern Dr	Mesquite, NM 88048	Donna Ana	Region 1	(505) 233-3078	Founded in 1974, Bright Star Dairy is a small organization in the dairy farms industry located in Mesquite, NM. It has 21 full time employees and generates an estimated \$2.5 million in annual revenue.	
1	Dairies	Buena Vista Dairy	38950 Stern Dr	La Mesa, NM 88044	Donna Ana	Region 1	(505) 233-0438	Estimated Employees: 5	
1	Dairies	Buena Vista Dairy	11801 Frontage Road,	Mesquite, NM 88048	Donna Ana	Region 1	(505) 233-2671	Founded in 1980, Buena Vista Dairy is a mid-sized organization in the dairy farms industry located in Mesquite, NM. It has 60 full time employees and generates an estimated \$5.5 million in annual revenue.	
1	Farms	Ceresantes Agri/Business	9926 Highway 478,	Valdo, NM 88072	Donna Ana	Region 1		Founded in 1978, Ceresantes Enterprises Inc. is a mid-sized food manufacturer in Valdo, New Mexico. It has 56 full time employees and generates \$6.2 million in annual revenue. Categorized under: Chili Pepper or Pepper in Valdo, NM; Veggie Food Preparations; Vegetable/Mexican Farm; and Pickles/Sauces/Dressing	
1	Farms	Custom Peasan Harvesting, Inc.	171 Sunshine Lane	Mesquite, NM 88048	Donna Ana	Region 1	(575) 333-3175	Founded in 1978, Custom Peasan Harvesting, Inc. is a mid-sized organization in the tree nut farms industry located in Mesquite, NM. It has 60 full time employees and generates an estimated \$2.7 million in annual revenue.	
					88005	Donna Ana	Region 1	(575) 236-2848	
					88048	Donna Ana	Region 1	(505) 233-4548	



QUESTIONS RESPONSES

Recruiter Visit Log

Remember that all our information goes into our database and is used to help us better serve you. All responses will be kept in our database.

Date:

Recruiter Name:

Location/ County:

Results of the Visit:

Follow up information:



Finding the Right Tools

[Google forms](#) &
[spreadsheets](#) or [Charts](#)

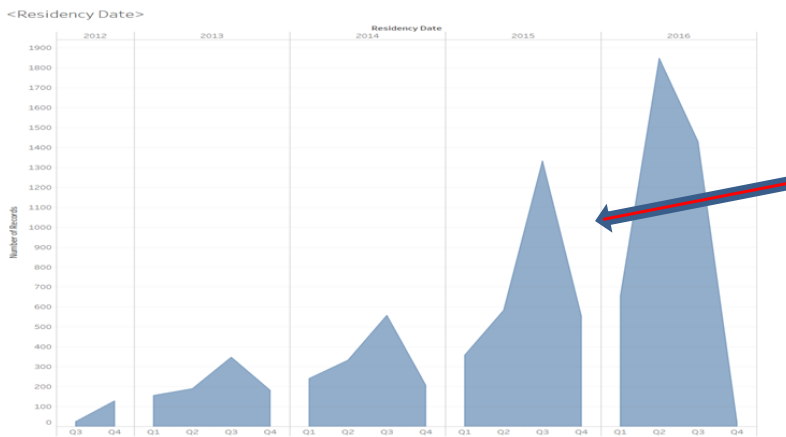
**Brainstorm-
How could these be
helpful with data?**

Examples:

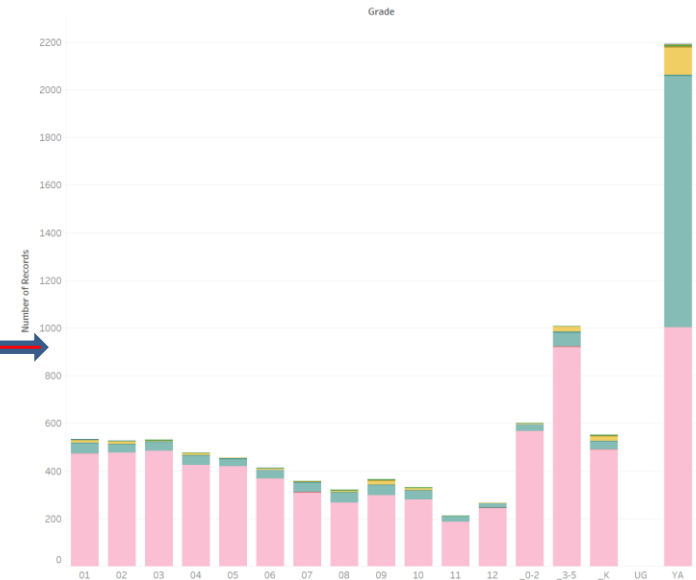
- Service logs to track what services are provided.
- Occupational survey logs to keep track of which students have been called/visited to determine eligibility and report back to school districts.
- Daily report logs to track recruiter efforts and then log relevant info into google maps of recruiter visits.

Tableau Sample

Tableau Public is a free resource that you can use to analyze your data. For example this sample lets a state know where in each grade level the students are coming from as a color is assigned to each different place.



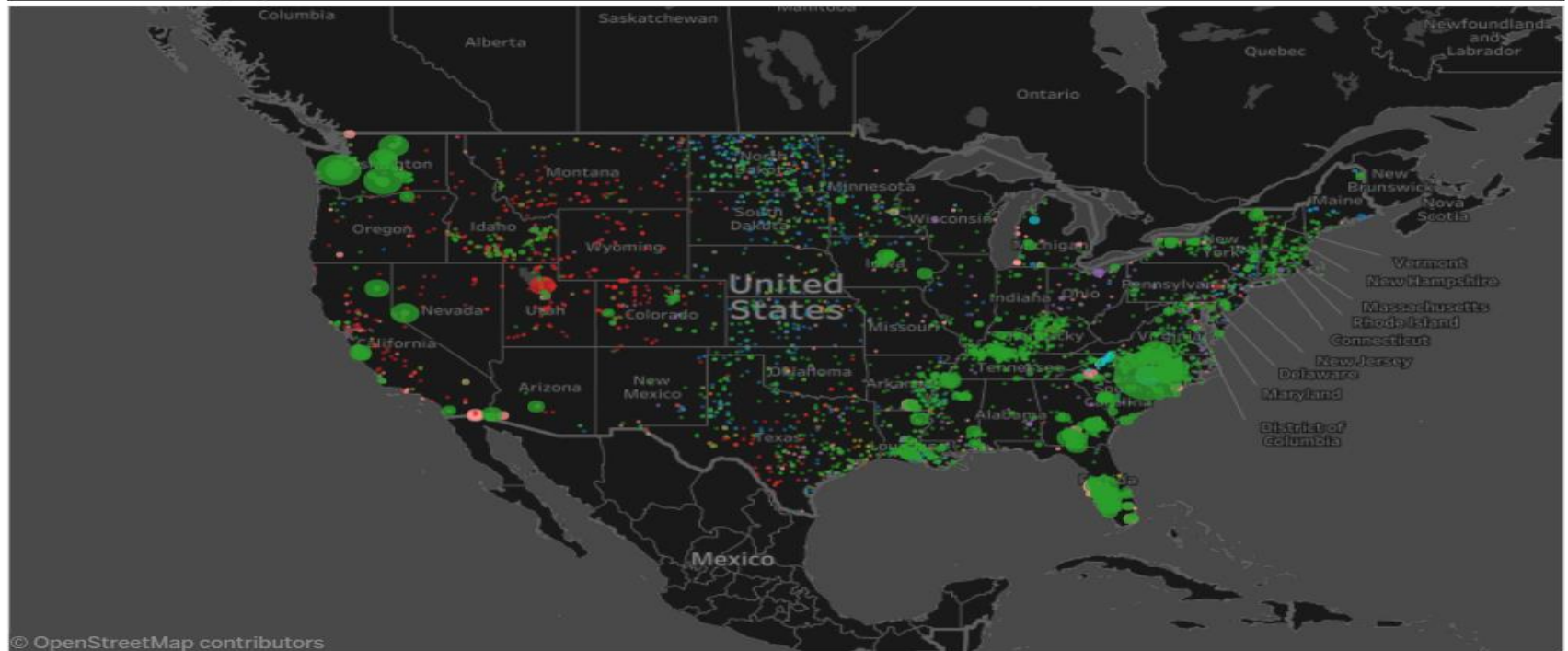
<Grade Breakdown and where students are from>



In this one you can see easily when the last QAD was for a group of MEP students.

Tableau Sample

2015 H-2A Employer Certifications



© OpenStreetMap contributors

Job Titles	
■ Crop Production Workers	■ Nursery Production Workers
■ Animal, Livestock, Ranch Production Workers	■ Grain Production Workers
■ Aquaculture Production Workers	■ Bee and Honey Production Workers
■ Christmas Tree Production Workers	■ Other
■ Mechanical and Equipment Operators	

State

(All) ▼

Number of Workers Certified

0 9,065

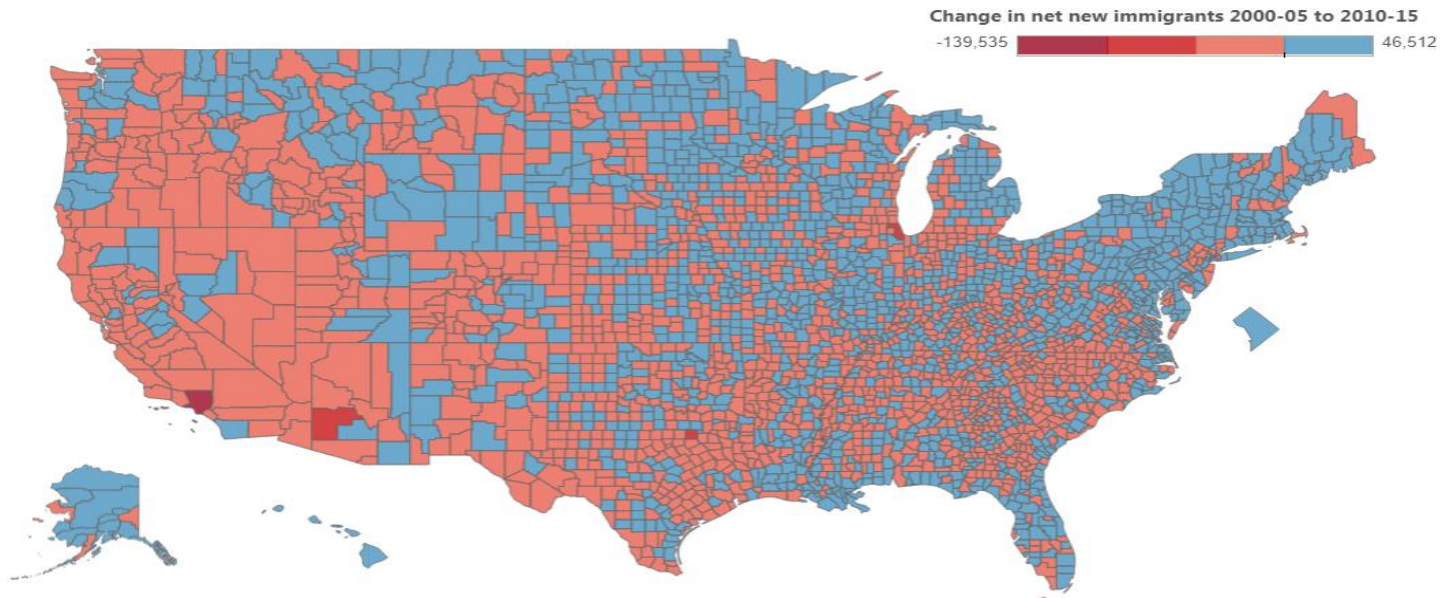
Tableau Sample

INTERACTIVE GUIDE TO THE NAWS



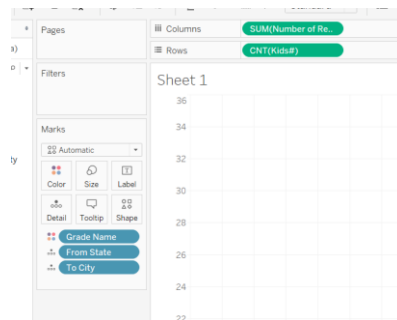
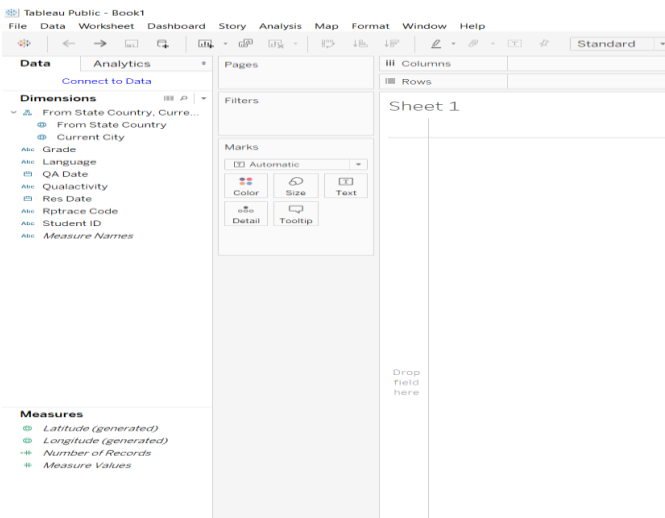
Where Immigration Has Risen and Fallen

Many rural counties have seen fewer new immigrants in the last five years than in the decade before, while many urban areas have experienced an increase in new arrivals. Hover over counties for details.



Stateline Analysis, May 2016 | Source: U.S. Census estimates, 2000-05 compared to 2010-15

Tableau Public - In order to get started you should review their tutorials to see how you can play with the data and what types of visuals can be created.



For text tables try

1 or more **Dimensions**

1 or more **Measures**

There is a free Public Version and also a paid version. Both are great resources.

Can you use your data system for real time updates:

Services Goal: Service providers have real time data on how many students are in a certain town and/or area and who has been served/not served.

ID&R Goal: Recruiters have real time data on who has been recruited, where and when

All of this data can be pulled from state database, Google Forms and connected to other spreadsheets



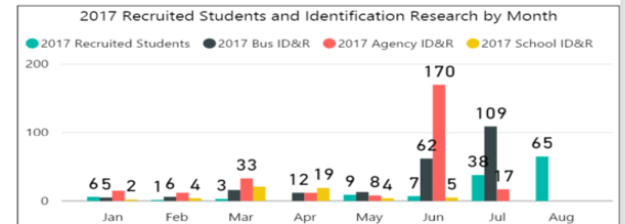
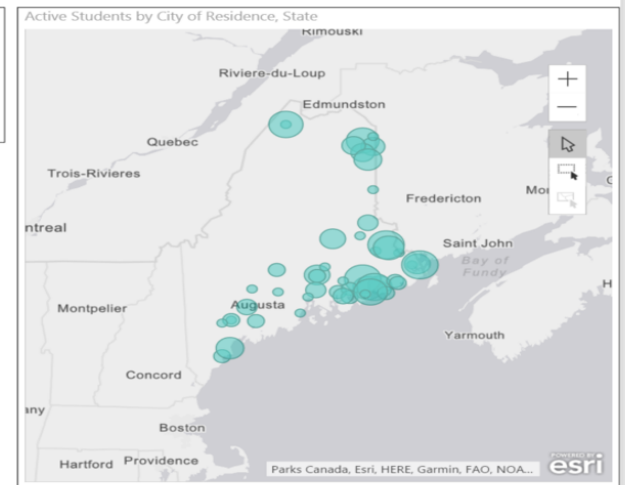
A Tour of the Maine MEP Dashboards



Maine Migrant Education Program
 Identification, Recruitment, and Services
 Key Performance Indicators

8/24/17 9:24 AM
 Dashboards Last Updated

94 % % Active Contacted	89 % % Active Served	100 % % PFS Contacted	100 % % PFS Served
-----------------------------------	--------------------------------	---------------------------------	------------------------------



September 2016 - August 2017 Services - Key Indicators					
307	277	90 %	290	94 %	100 %
All Students	All Served	% All Served	All Contacted	% All Contacted	% PFS Served
265	237	89 %	248	94 %	24
Active Students	Active Served	% Active Served	Active Contacted	% Active Contac...	PFS Students
24	9	9	4,641	4,983	1820
PFS Students Ser...	Active PFS Stud...	Active PFS Served	Total Services	Total Contacts	MTD Services

All Identification - Research and On-site Visits					
545	152 %	883	223	267	55
2017 Total ID&R	2017/2016 ID&R	Prior 2017 ID&R	2017 Bus ID&R	2017 Agency ID...	2017 School ID&R
384	63	185	1,428	131	109
All Employers	Crops Investigat...	Cities Investigtd	Total ID&R	MTD Total ID&R	MTD Bus ID&R

Recruitment and COE Data					
81	130	130	80	1	1,326
2017 COEs	2017 Qualifying ...	2017 Recruited ...	2017 Approved ...	2017 Pending C...	Qualifying Moves

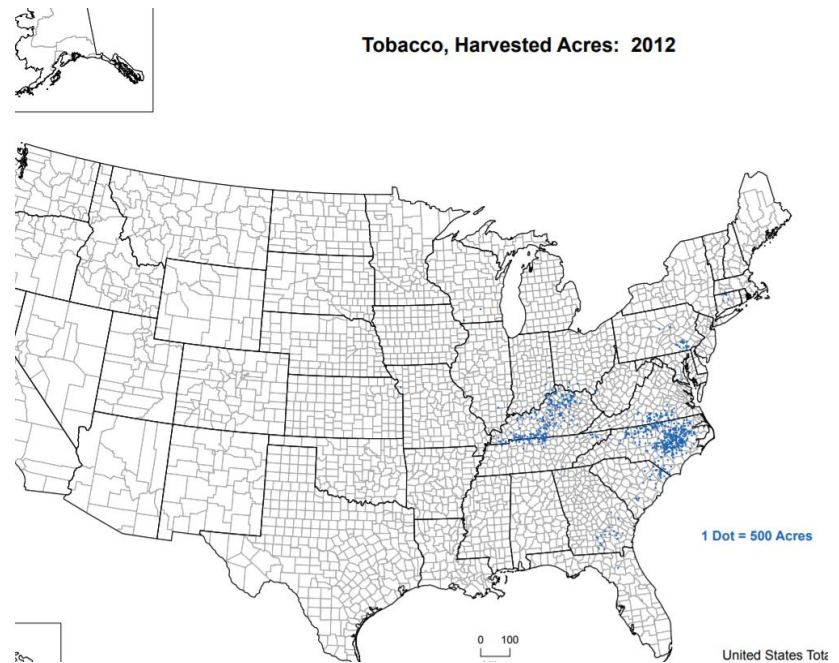
Data Analysis Can Help You do the following:

- Know when students are coming and going.
- See quickly and clearly grade level information and changes.
- Determine reasons for changes
- Ensure programs are designed around key population data.
- Keep up with student service numbers.
- Be ready to determine upcoming changes in ag work before they happen.
- Correlate numbers with MEP numbers
- Ensure you are aware of all possible agriculture work.
- Understand change is constant!



Ag Census Data

- Official Census is every 5 years
- Last was in 2012. New one out Feb 2019.
- Includes TONS of data
- [https://www.agcensus.usda.gov/About the Census/](https://www.agcensus.usda.gov/About%20the%20Census/)
- There are new publications that come out all of the time also.
- New Ag Maps





Census Publications

Choose a Census ▾

Find Current Data By

[Congressional Districts](#)

[Race, Ethnicity & Gender](#)

[States and Counties](#)

[Topics](#)

2012 Census Publications

Tennessee

State and County Reports

- [State](#)
- [County](#)

County Profiles

- [State & County](#)

Rankings

- [Market Value of Ag Products](#)

Congressional Districts

- [Congressional District Rankings](#)
- [Congressional District Profiles](#)


Census Quick Stats

Query the 2012 Census of Agriculture database to retrieve customized tables with census data at the national, state and county levels


[Click here to access the Quick Stats system.](#)

Ag Census Quick Stats


- Also available from USDA but they are updated more frequently.
- https://quickstats.nass.usda.gov/?source_desc=CENSUS
- Use this to find more updated information of where crops are being planted in your state.

Select Commodity (one or more) 

<p>Program:</p> <input type="text" value="CENSUS"/> <input type="text" value="SURVEY"/>	<p>Sector:</p> <input type="text" value="ANIMALS & PRODUCTS"/> <input type="text" value="CROPS"/> <input type="text" value="ECONOMICS"/> <input type="text" value="ENVIRONMENTAL"/>	<p>Group:</p> <input type="text" value="ANIMAL TOTALS"/> <input type="text" value="AQUACULTURE"/> <input type="text" value="CROP TOTALS"/> <input type="text" value="DAIRY"/> <input type="text" value="EXPENSES"/> <input type="text" value="FARMS & LAND & ASSETS"/> <input type="text" value="FIELD CROPS"/> <input type="text" value="FRUIT & TREE NUTS"/> <input type="text" value="HORTICULTURE"/>	<p>Commodity:</p> <input type="text" value="AG LAND"/> <input type="text" value="AG SERVICES"/> <input type="text" value="AG SERVICES & RENT"/> <input type="text" value="ALCOHOL COPRODUCTS"/> <input type="text" value="ALMONDS"/> <input type="text" value="ANIMAL PRODUCTS, OTHER"/> <input type="text" value="ANIMAL SECTOR"/> <input type="text" value="ANIMAL TOTALS"/> <input type="text" value="APPLES"/>
------------------------------------------------------------------------------------------------	------------------------------------------------------------------------------------------------------------------------------------------------------------------------------------------------	-----------------------------------------------------------------------------------------------------------------------------------------------------------------------------------------------------------------------------------------------------------------------------------------------------------------------------------------------------------------------------------------------------------------------------	-------------------------------------------------------------------------------------------------------------------------------------------------------------------------------------------------------------------------------------------------------------------------------------------------------------------------------------------------------------------------------------------------------------------------------

Select Location (one or more) 

Geographic Level:

Select Time (one or more) 

Year:

Ag Census loaded into Excel

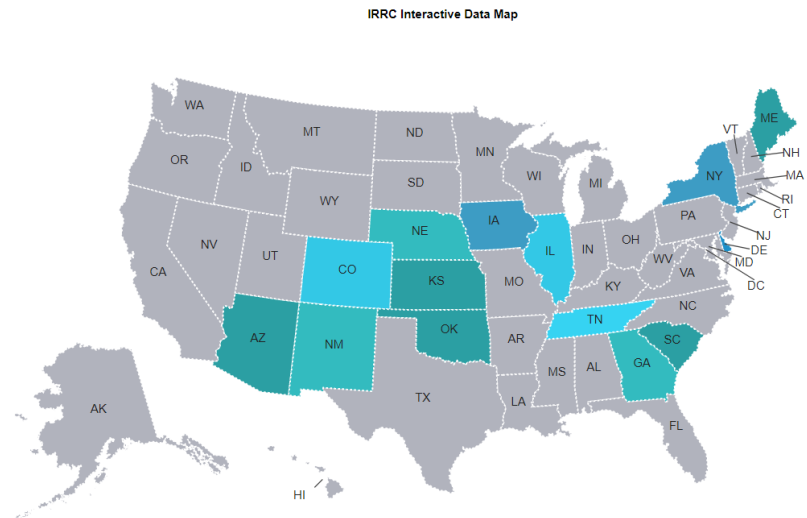
- These are accessible on the IRRC website
- <http://www.idr-consortium.net/AgCensus.html>
- All key elements from the census report were typed into an excel sheet.
- <https://www.agcensus.usda.gov/Publications/2012/>

County	Farms	Acres #	Average size of farm acres	Cropland farms # of	Cropland farms acres	Harvested cropland acres	Market value of \$ sold (\$/10 average per farm)	Market
Clay	424	79,745	188	353	27,263	19,002	85,827	4,34
Cocke	625	61,059	98	473	20,420	16,497	44,584	10,22
Coffee	895	144,840	162	667	79,978	74,092	67,884	39,31
Crockett	369	130,550	354	308	112,118	100,513	168,247	59,26
DeKalb	637	89,551	141	456	33,510	27,639	98,448	57,33
Dickson	1,143	148,512	130	833	46,140	34,723	12,209	5,576
Dyer	449	211,702	471	392	188,343	180,767	241,407	102,8
Fayette	745	229,022	307	582	147,414	115,228	101,050	67,91
Fentress	536	90,842	169	388	26,344	19,822	76,515	3,64
Franklin	861	125,339	146	643	74,761	67,867	94,565	35,71
Gibson	830	286,178	345	697	250,220	233,713	174,923	137,3

Integration with Power BI

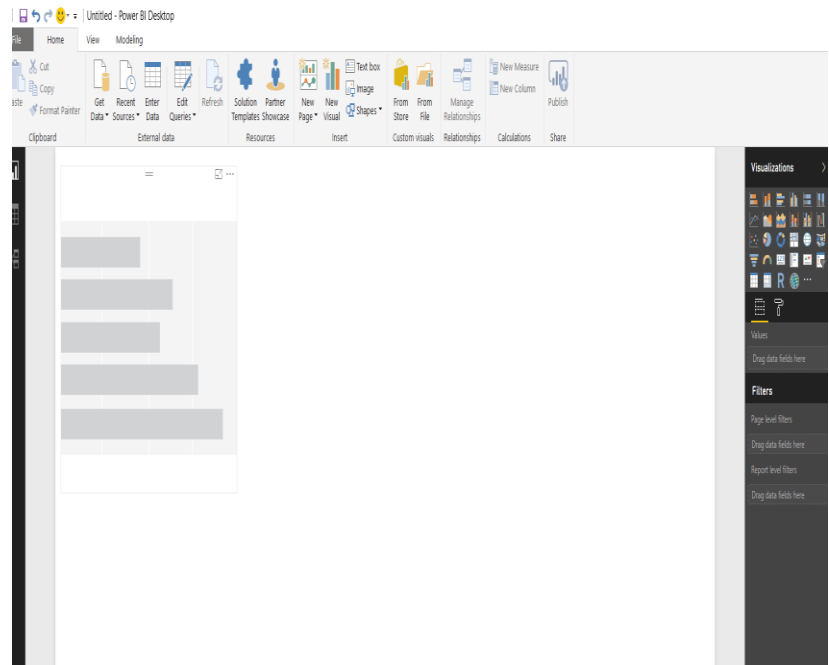
- Make visualizations from data sheets such as EXCEL
- The visualizations work together and it helps you look at multiple data elements at the same time.
- Results can help highlight key data quickly.
- Determined it would be a helpful tool to create the [IRRC state profiles](#).
- [Student State Profiles](#)

State MEP Profile Data Map



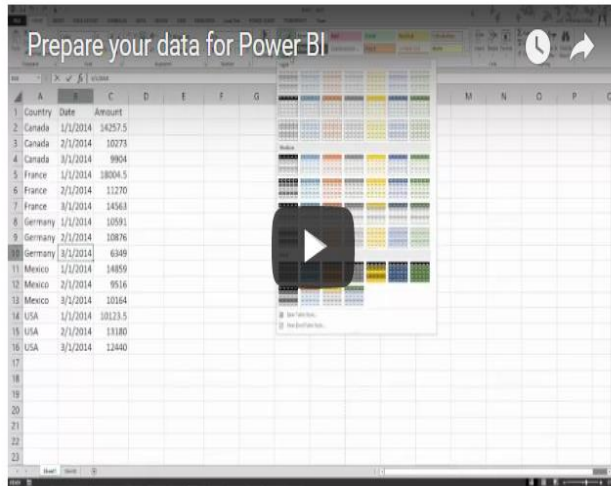
Getting Started with Power BI

- Desktop Version and online version
- [Free Download](#)
- Once you download it you can open it up and load in a file and then begin to work with the visualizations.
- Files must be converted to CSV



Make sure to keep learning

- This video covers some tips for optimizing your data for Power BI. Learn the best way to format your data before uploading it to the service.



- We are going to help you get your feet wet but don't stop learning with just this presentation.
- Lots of [YouTube Tutorials](#) and new features you can keep up with.
- They have tons of [webinars](#) also.

- 1. What is an area you would like to explore with data analysis?**
- 2. What questions do you have about what data might need to be gathered or analyzed in your state?**
- 3. Is there a tool or practice that might be helpful to share with the whole group?**





Contact Information

Jessica Castañeda
Educational Consultant
Spark Innovations
931-668-4129

sparkedinnovations@gmail.com

www.sparkedinnovations.net



2018 Joint CIG Dissemination Event